



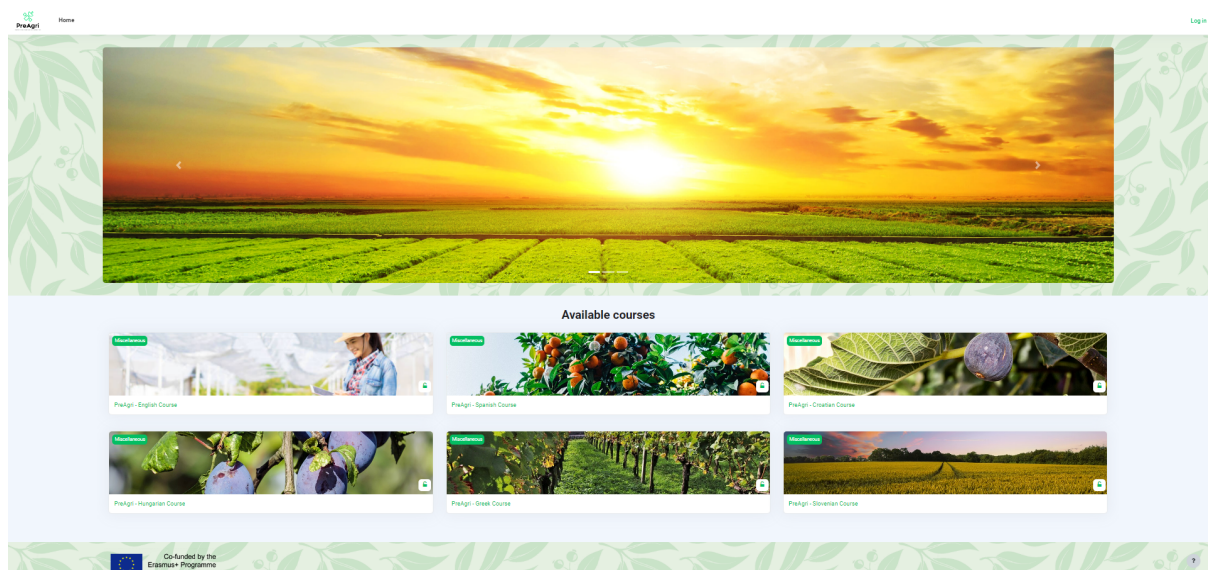
GUIDE TO MOODLE ACCESS

<https://elearning.preagri.eu/>

PreAgri's Project (2020-1-EL01-KA202-078806) is an Erasmus+ project whose acronym stands for "New Skills Development in Precision Agriculture" and which endeavours to train European workforce in the field of agriculture so that more farmers are able to benefit from new technology in precision agriculture and are thus empowered to make use of the latest equipment, gadgets and tools to become more efficient, competitive and sustainable while facing the challenges of Industry 4.0 and climate change.

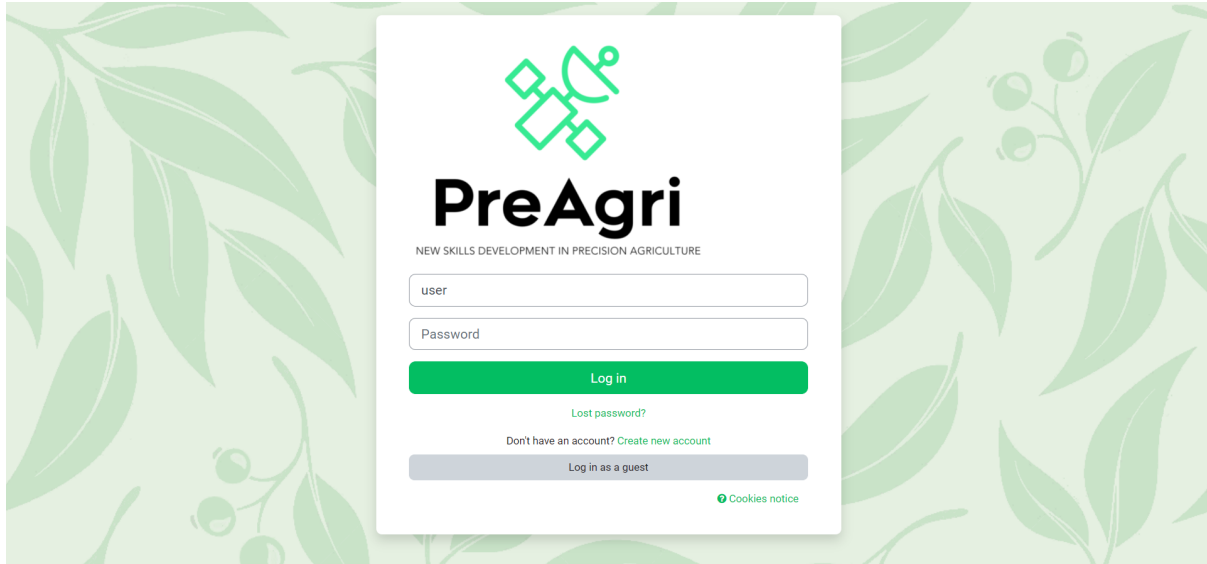
This project will be worked in Moodle, a Learning Content Management System (LCMS). LCMS is a platform that integrates authoring, delivery, publishing and analysis of content in a multi-user environment. It is like a virtual campus.

To access, you have to click in the next link: <https://elearning.preagri.eu/>, and you will be redirected to a screen like this:

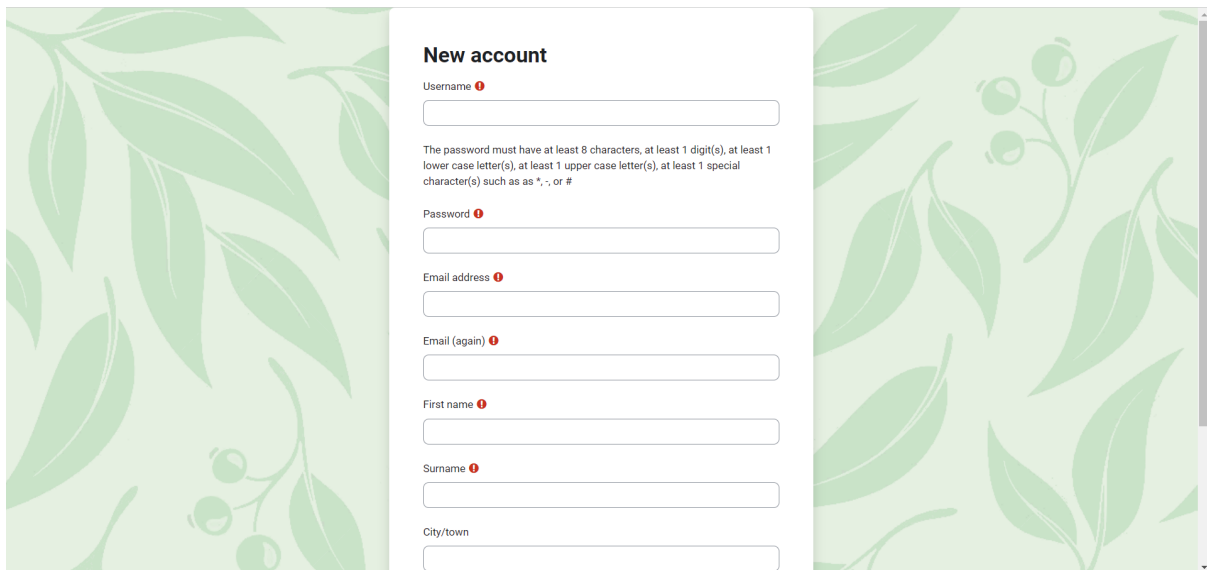




If you want to access any of the courses, you can click on it. If you have an account, you have to introduce your ID: username and password. Otherwise, you can create a new account by clicking on “Create new account” and filling all the boxes: username, password, email address...



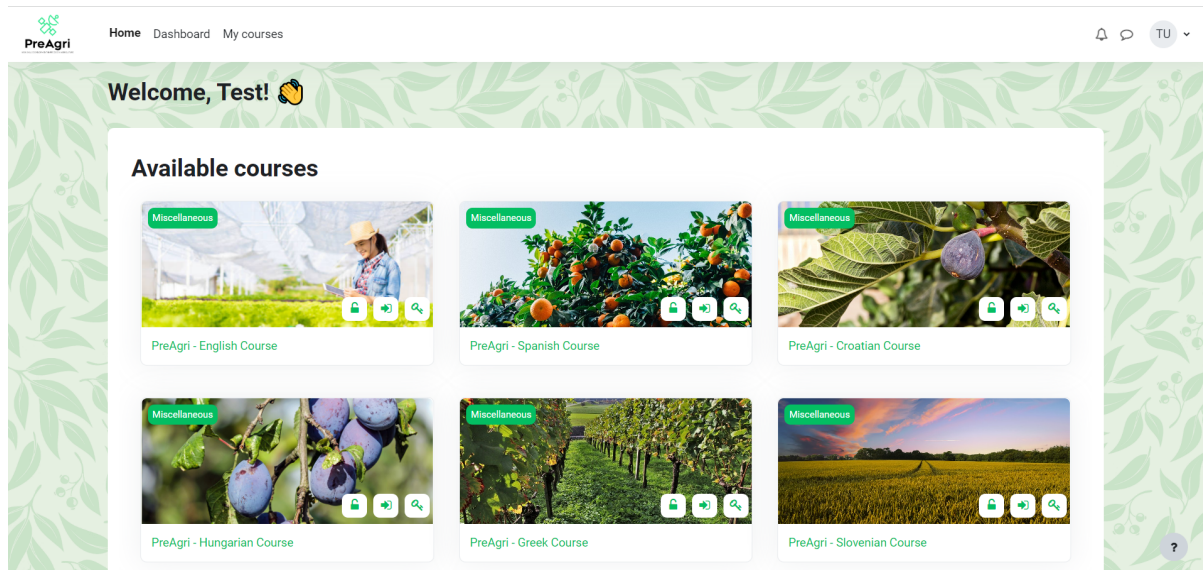
The login page features the PreAgri logo at the top, followed by the tagline "NEW SKILLS DEVELOPMENT IN PRECISION AGRICULTURE". Below this are two input fields for "user" and "Password". A prominent green "Log in" button is centered below the fields. Underneath the button are links for "Lost password?", "Don't have an account? Create new account", and "Log in as a guest". A "Cookies notice" link is located at the bottom right of the form area.



The "New account" page includes a title and a series of input fields: "Username", "Password", "Email address", "Email (again)", "First name", "Surname", and "City/town". A password requirement note is placed between the Username and Password fields: "The password must have at least 8 characters, at least 1 digit(s), at least 1 lower case letter(s), at least 1 upper case letter(s), at least 1 special character(s) such as *, -, or #". Each field has a red error icon to its right.



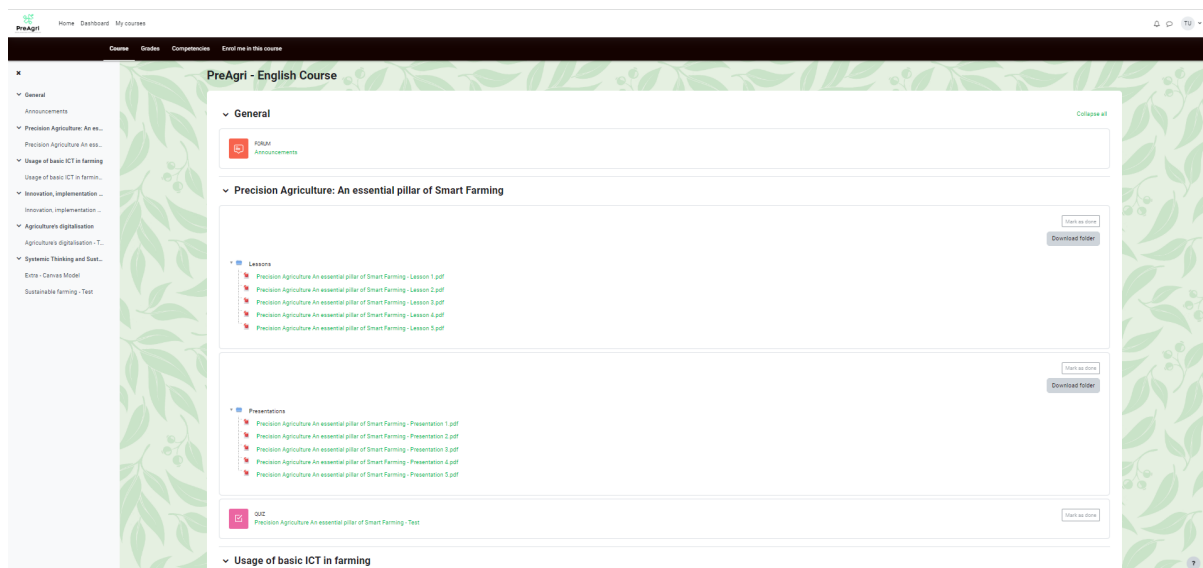
When you have access to the Moodle, you will see the different courses in the different languages. You have to click on the course that corresponds with you or your preference.

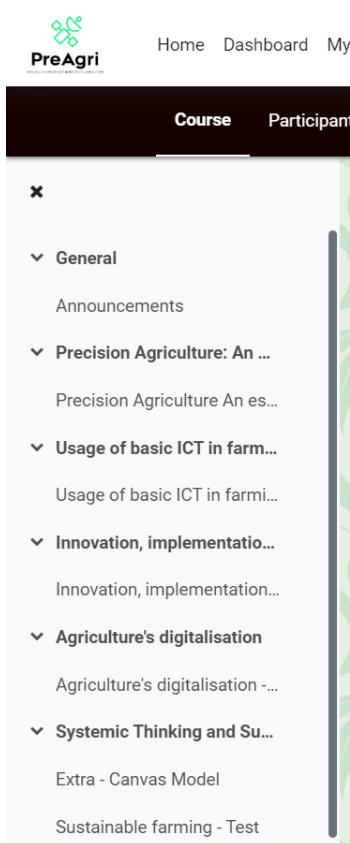


Once in your course, you will have access to all the contents and units. The contents are organised in units arranged in vertical. This distribution is positive for the learning and the autonomy: you can know what your progress is and what the last contents worked are.

In each module (lessons) you will find different PowerPoints and Quizzes that will help you in your learning. In all the modules you will have a quiz that you have to pass. Finally, you must have passed all the quizzes.

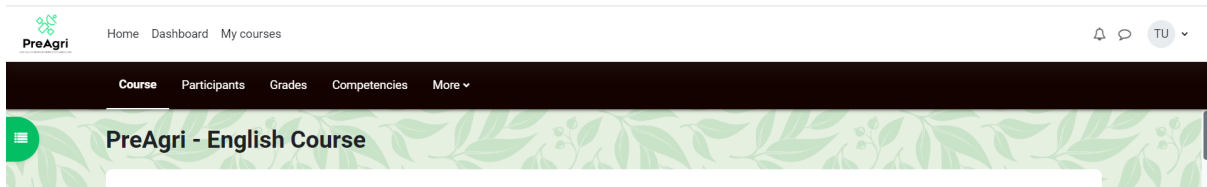
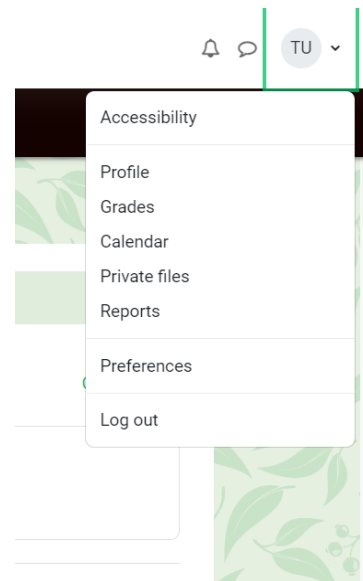
On the other hand, you can see a notice board (Announcements) in which you can talk and share ideas with your partners.





About the tools of the platform, in the menu on the left side (the four lines), you can find direct access to the course sections (modules and lessons).

In the menu on the right side (clicking on your profile), you can find other tools of the platform such as your profile settings (email address, password, language...), messages, preferences...



In the menu on the top of the screen you can find different buttons where you can check some items like the participants of the course (your partners), your grades, competences of the course, on which courses you are enrolled, etc.

Now you know how to interact with your platform. If you have any doubt or question about Moodle's use, please contact us in: projects@inerciadigital.com. We will solve your doubts as soon as possible.

It is time to learn!